

TERMINAL TYPES:

- # HONEYWELL RM 7800 SUBBASE
- # COMPRESSION
- # MOLEX CONNECTOR
- # MALE SPADE TERMINAL
- # FEMALE SPADE TERMINAL
- # RJ11 OR RJ45 CONNECTOR

RELAY / SWITCH TERMINALS:
 C = COMMON
 NC = NORM. CLOSED
 NO = NORM. OPEN

REV: D	EN: 34-1084-9299	DATE: 10/2/14	DWN: CJW	CHKD: MKU	APPD:
LWCO WAS UPDATED					

Thermal Solutions Products LLC
 PROPERTY OF
 LANCASTER, PA 17604-3244

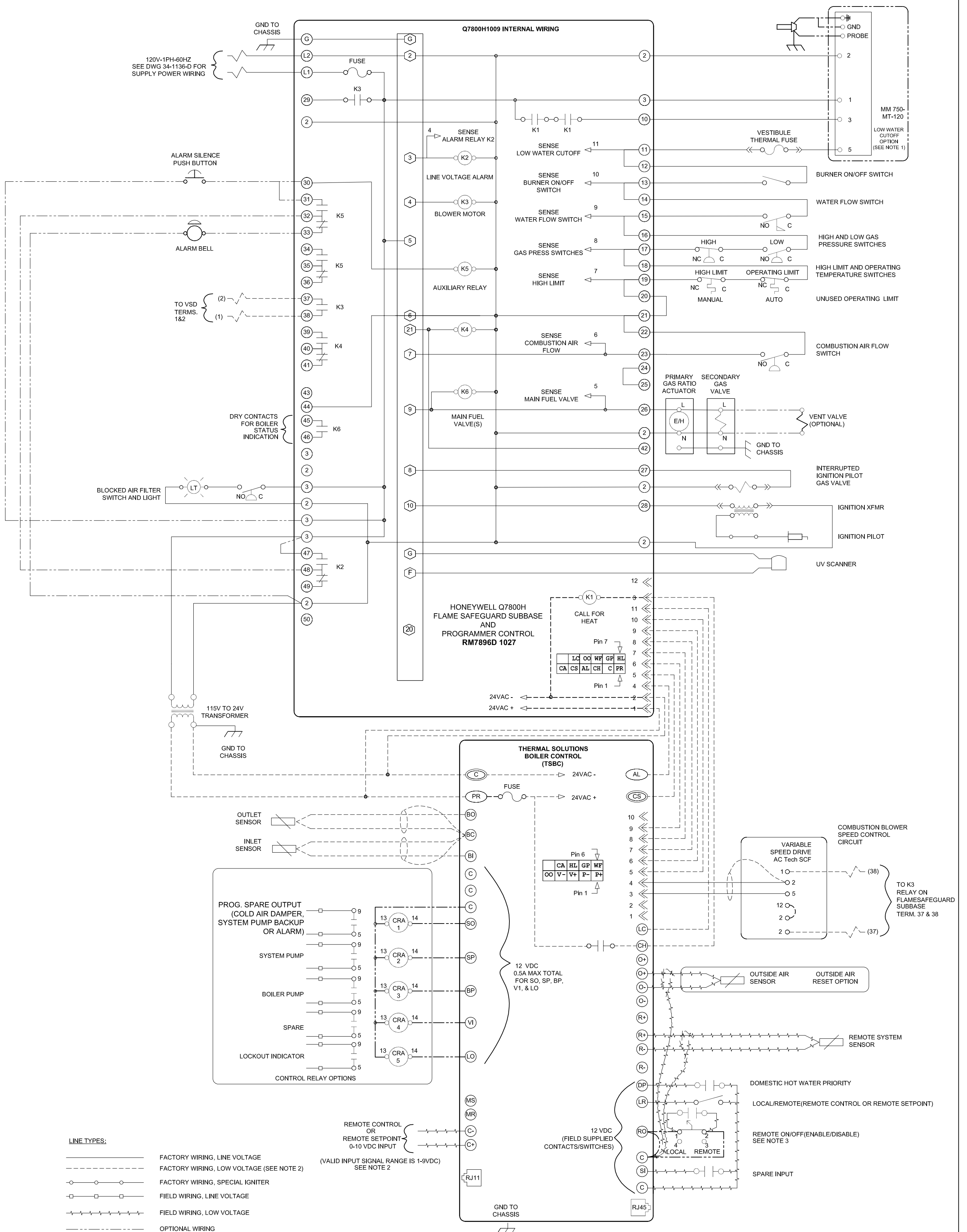
REFERENCE ASME Y14.5M-1994 FOR GEOMETRIC TOLERANCES. ALL DIMENSIONS IN INCHES. DRAWING NOT TO BE SCALED. NON-BASIC DIMENSIONAL AND ANGULAR TOLERANCES UNLESS OTHERWISE NOTED.
 DECIMALS: X.X - ±0.1, X.XX - ±0.03, X.XXX - ±0.005, FRACTIONAL: ±1/32, ANGULAR: ±1°

THIS DOCUMENT CONTAINS CONFIDENTIAL INFORMATION WHICH IS THE PROPERTY OF THERMAL SOLUTIONS, LLC. THIS DOCUMENT MAY NOT BE REPRODUCED, TRANSMITTED OR USED, OR ITS CONTENTS DISCLOSED, WITHOUT THE WRITTEN PERMISSION OF THE OWNER.

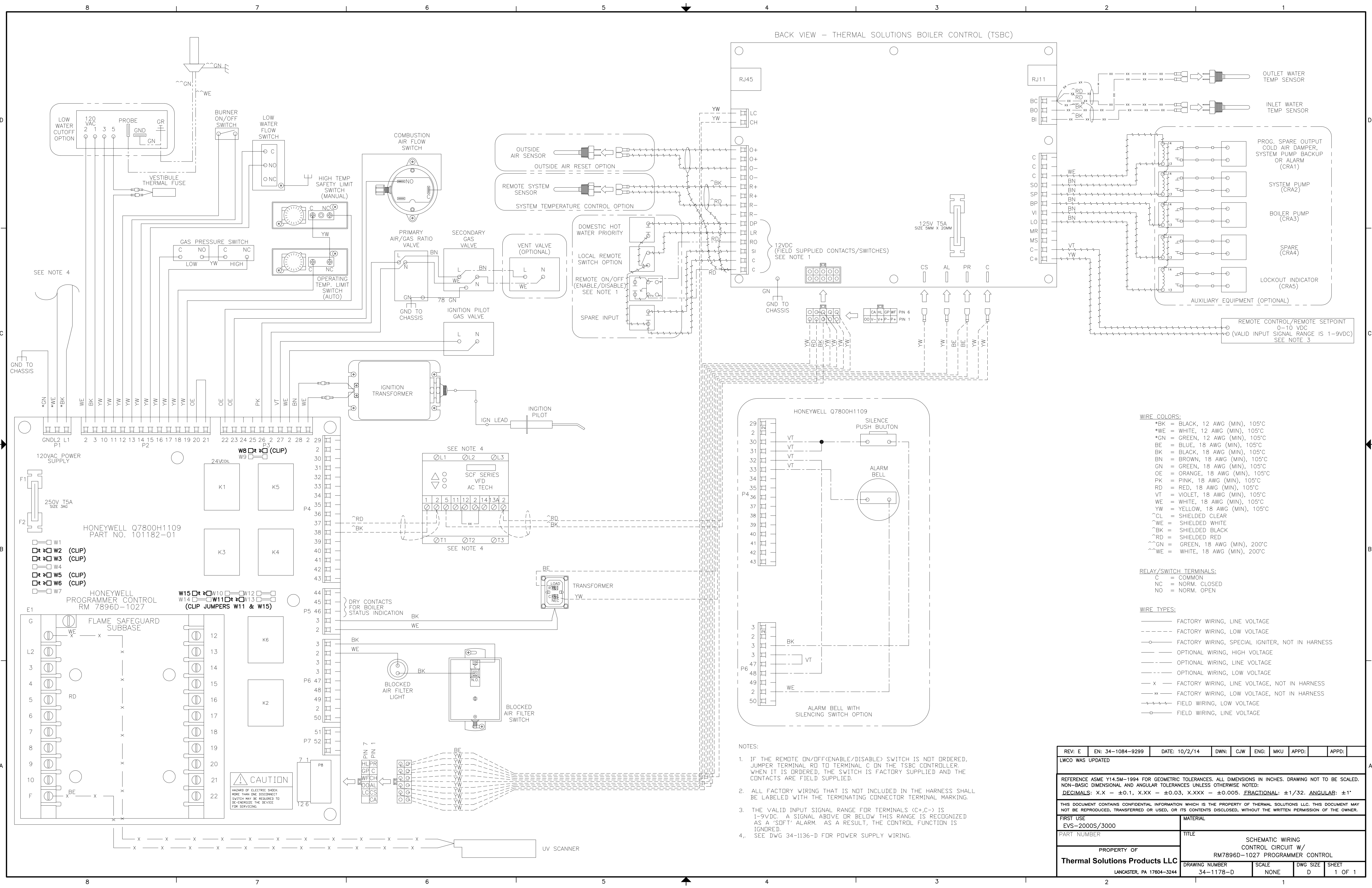
Thermal Solutions Products LLC
 DRAWING NUMBER: 34-1180-C
 SCALE: NONE
 DWG SIZE: C
 SHEET: 1 OF 1

Thermal Solutions Products LLC
 RM7896D 1027 PROGRAMMER CONTROL: EVS-2000S/3000
 LADDER WIRING DIAGRAM
 CONTROL CIRCUIT W/
 PROGRAMMER CONTROL

- NOTES:**
- FACTORY WIRING, LOW VOLTAGE IS 24VAC UNLESS OTHERWISE INDICATED.
 - THE VALID INPUT SIGNAL RANGE FOR TERMINALS (C+,C-) IS 1-9VDC. A SIGNAL ABOVE OR BELOW THIS RANGE IS RECOGNIZED AS A 'SOFT' ALARM. AS A RESULT, THE CONTROL FUNCTION IS IGNORED.
 - IF THE REMOTE ON/OFF(ENABLE/DISABLE) IS NOT ORDERED, JUMPER TERMINAL RD TO TERMINAL C ON THE TSBC. WHEN IT IS ORDERED, THE SWITCH IS FACTORY SUPPLIED AND THE CONTACTS ARE FIELD SUPPLIED.



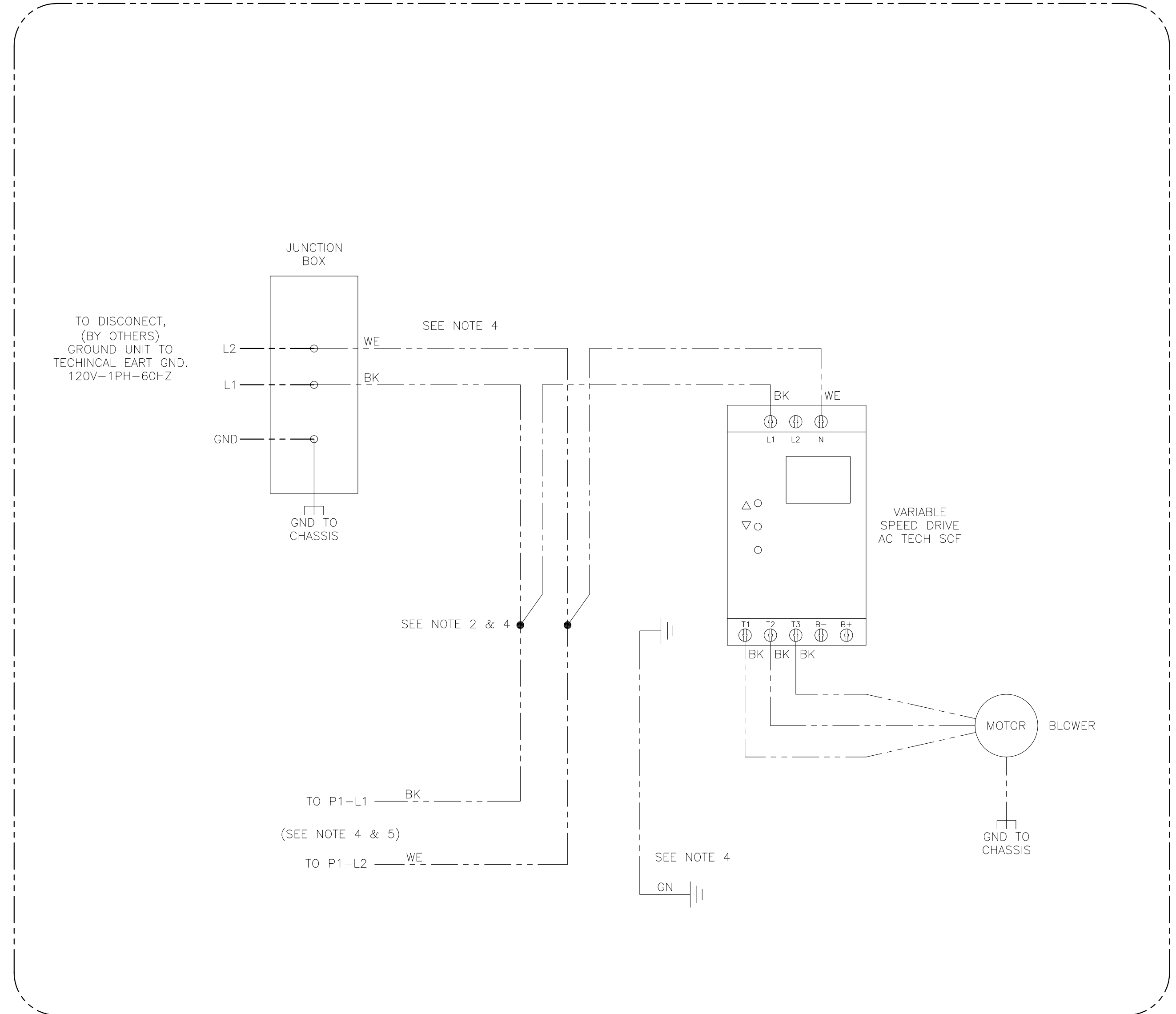
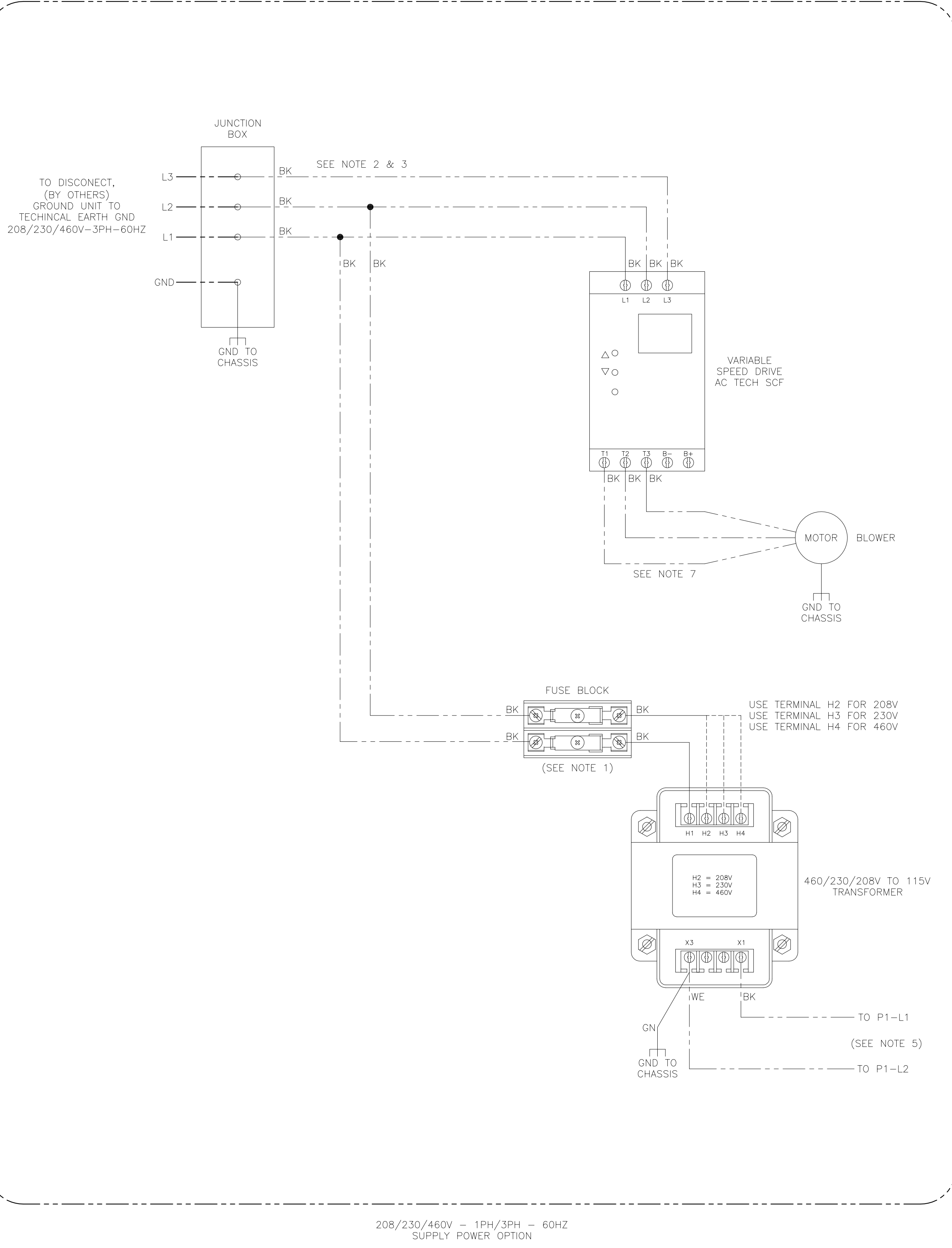
BACK VIEW - THERMAL SOLUTIONS BOILER CONTROL (TSBC)



- WIRE COLORS:**
- *BK = BLACK, 12 AWG (MIN), 105°C
 - *WE = WHITE, 12 AWG (MIN), 105°C
 - *GN = GREEN, 12 AWG (MIN), 105°C
 - BE = BLUE, 18 AWG (MIN), 105°C
 - BK = BLACK, 18 AWG (MIN), 105°C
 - BN = BROWN, 18 AWG (MIN), 105°C
 - GN = GREEN, 18 AWG (MIN), 105°C
 - OE = ORANGE, 18 AWG (MIN), 105°C
 - PK = PINK, 18 AWG (MIN), 105°C
 - RD = RED, 18 AWG (MIN), 105°C
 - VT = VIOLET, 18 AWG (MIN), 105°C
 - WE = WHITE, 18 AWG (MIN), 105°C
 - YW = YELLOW, 18 AWG (MIN), 105°C
 - ~CL = SHIELDED CLEAR
 - ~WE = SHIELDED WHITE
 - ~BK = SHIELDED BLACK
 - ~RD = SHIELDED RED
 - ~GN = GREEN, 18 AWG (MIN), 200°C
 - ~WE = WHITE, 18 AWG (MIN), 200°C
- RELAY/SWITCH TERMINALS:**
- C = COMMON
 - NC = NORM. CLOSED
 - NO = NORM. OPEN
- WIRE TYPES:**
- FACTORY WIRING, LINE VOLTAGE
 - FACTORY WIRING, LOW VOLTAGE
 - FACTORY WIRING, SPECIAL IGNITER, NOT IN HARNESS
 - OPTIONAL WIRING, HIGH VOLTAGE
 - OPTIONAL WIRING, LINE VOLTAGE
 - OPTIONAL WIRING, LOW VOLTAGE
 - x - - - - - FACTORY WIRING, LINE VOLTAGE, NOT IN HARNESS
 - xx - - - - - FACTORY WIRING, LOW VOLTAGE, NOT IN HARNESS
 - - - - - FIELD WIRING, LOW VOLTAGE
 - - - - - FIELD WIRING, LINE VOLTAGE

- NOTES:**
- IF THE REMOTE ON/OFF (ENABLE/DISABLE) SWITCH IS NOT ORDERED, JUMPER TERMINAL RD TO TERMINAL C ON THE TSBC CONTROLLER. WHEN IT IS ORDERED, THE SWITCH IS FACTORY SUPPLIED AND THE CONTACTS ARE FIELD SUPPLIED.
 - ALL FACTORY WIRING THAT IS NOT INCLUDED IN THE HARNESS SHALL BE LABELED WITH THE TERMINATING CONNECTOR TERMINAL MARKING.
 - THE VALID INPUT SIGNAL RANGE FOR TERMINALS (C+,C-) IS 1-9VDC. A SIGNAL ABOVE OR BELOW THIS RANGE IS RECOGNIZED AS A 'SOFT' ALARM. AS A RESULT, THE CONTROL FUNCTION IS IGNORED.
 - SEE DWG 34-1136-D FOR POWER SUPPLY WIRING.

REV: E	EN: 34-1084-9299	DATE: 10/2/14	DWN: CJW	ENG: MKU	APPD:	APPD:
LWCO WAS UPDATED						
REFERENCE ASME Y14.5M-1994 FOR GEOMETRIC TOLERANCES. ALL DIMENSIONS IN INCHES. DRAWING NOT TO BE SCALED. NON-BASIC DIMENSIONAL AND ANGULAR TOLERANCES UNLESS OTHERWISE NOTED: DECIMALS: X.X - ±0.1, X.XX - ±0.03, X.XXX - ±0.005. FRACTIONAL: ±1/32. ANGULAR: ±1°						
THIS DOCUMENT CONTAINS CONFIDENTIAL INFORMATION WHICH IS THE PROPERTY OF THERMAL SOLUTIONS LLC. THIS DOCUMENT MAY NOT BE REPRODUCED, TRANSFERRED OR USED, OR ITS CONTENTS DISCLOSED, WITHOUT THE WRITTEN PERMISSION OF THE OWNER.						
FIRST USE EVS-2000S/3000	MATERIAL					
PART NUMBER	TITLE SCHEMATIC WIRING CONTROL CIRCUIT W/ RM7896D-1027 PROGRAMMER CONTROL					
PROPERTY OF Thermal Solutions Products LLC LANCASTER, PA 17604-3244			SCALE NONE	DWG SIZE D	SHEET 1 OF 1	



- NOTES:
- UL CLASS "CC" CARTRIDGE FUSE TIME DELAY, 600V AC, 200K I.R., 3 AMP.
 - USE SPRING CAGE CONNECTORS (PN 81368915) FOR WIRE JUNCTIONS.
 - IF SINGLE PHASE ELECTRICAL INPUT IS USED, L3 IF NOT USED
 - FOR 120V-1PH ONLY:
 - A. REMOVE FORKED CONNECTOR FROM BK WIRE LABELED L1-P1/115V XFMR X1 AND COMBINE INTO CONNECTOR AS SHOWN.
 - B. CLIP AND REMOVE WE WIRE LABELED L2-P1/115V XFMR X3 FROM FORKED CONNECTOR AND COMBINE INTO CONNECTOR AS SHOWN.
 - C. SECURE FORKED END AND RING TERMINAL END OF GN WIRE LABELED 115V XFMR GND/X3 TO THE CONTROL PANEL ASSEMBLY.
 - FOR CONTROL CIRCUIT WIRING, USE THE FOLLOWING DWGS:
 - SCHEMATIC:
 - 34-1134-D STANDARD } EVS-500/2000
 - 34-1148-D P.O.C. OPTION } EVS-500/2000
 - 34-1178-D STANDARD } EVS-2000S/3000
 - 34-1179-D P.O.C. OPTION } EVS-2000S/3000
 - LADDER:
 - 34-1135-C STANDARD } EVS-500/2000
 - 34-1147-C P.O.C. OPTION } EVS-500/2000
 - 34-1180-C STANDARD } EVS-2000S/3000
 - 34-1181-C P.O.C. OPTION } EVS-2000S/3000
 - ALL WIRING SHALL BE LABELED WITH THE TERMINATING CONNECTOR TERMINAL MARKING.
 - FOR 3 PHASE INPUT, THE LEAD WIRES MUST BE REVERSED AS SHOWN BELOW TO GET PROPER MOTOR ROTATION
 - >L1 TO T2
 - >L2 TO T1
 - >L3 TO T3

WIRING LEGEND

--- FACTORY WIRING, 12 AWG, 600V, 105°C

— FACTORY WIRING, 18 AWG, 600V, 105°C

REV: H	EN: 34-1112-9677	DATE: 02/26/15	DWN: CJW	ENG: MKU	APPD:	APPD:
DESCRIPTION: ADDED NOTE 7						
REFERENCE ASME Y14.5M-1994 FOR GEOMETRIC TOLERANCES. ALL DIMENSIONS IN INCHES. DRAWING NOT TO BE SCALED. NON-BASIC DIMENSIONAL AND ANGULAR TOLERANCES UNLESS OTHERWISE NOTED: DECIMALS: X.X - ±0.1, X.XX - ±0.03, X.XXX - ±0.005. FRACTIONAL: ±1/32. ANGULAR: ±1°						
THIS DOCUMENT CONTAINS CONFIDENTIAL INFORMATION WHICH IS THE PROPERTY OF THERMAL SOLUTIONS LLC. THIS DOCUMENT MAY NOT BE REPRODUCED, TRANSFERRED OR USED, OR ITS CONTENTS DISCLOSED, WITHOUT THE WRITTEN PERMISSION OF THE OWNER.						
FIRST USE EVS-500/3000			MATERIAL			
PROPERTY OF Thermal Solutions Products LLC LANCASTER, PA 17604-3244			TITLE SCHEMATIC WIRING SUPPLY POWER			
DRAWING NUMBER 34-1136-D		SCALE NONE	DWG SIZE D	SHEET 1 OF 1		